



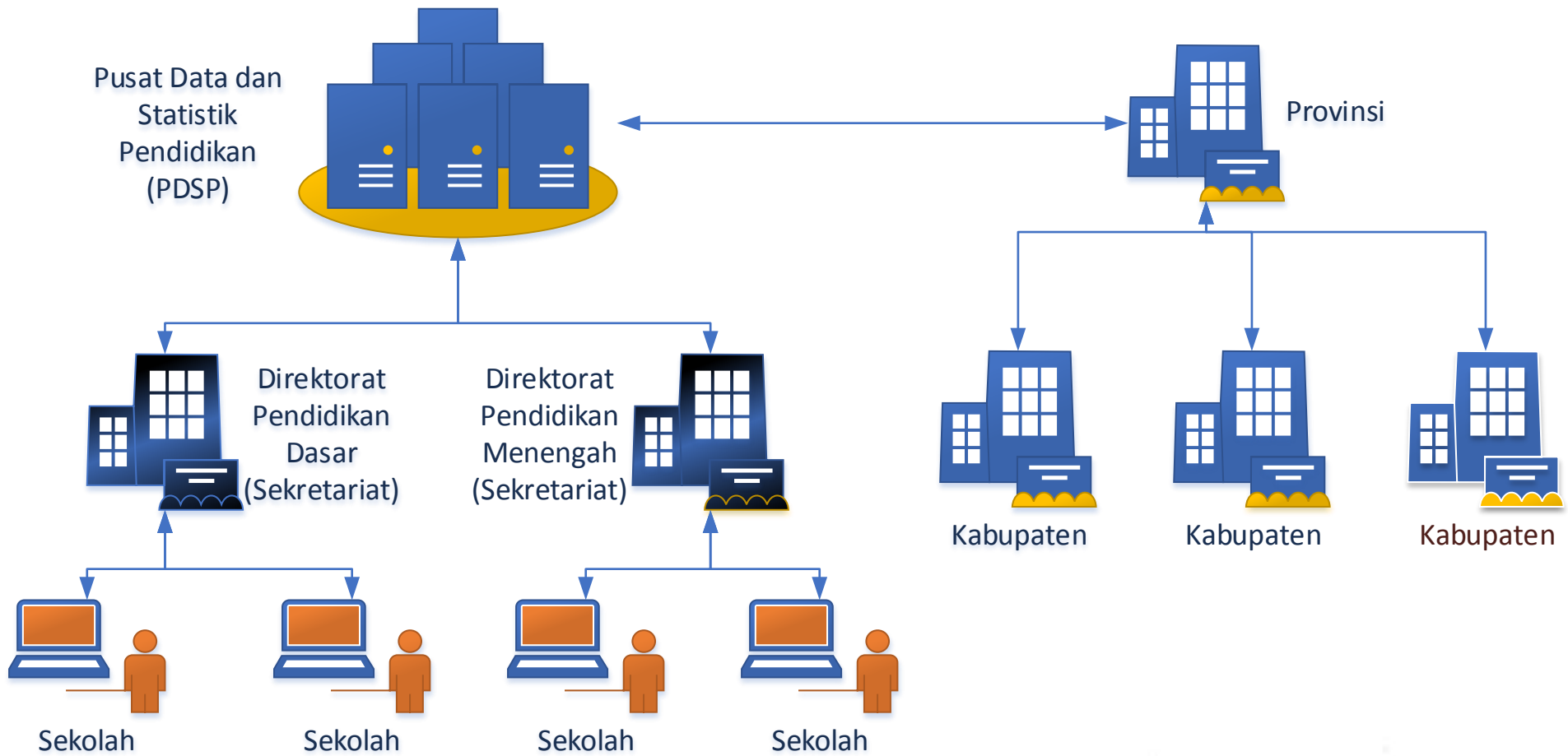
PUSAT DATA DAN STATISTIK PENDIDIKAN 

PEMBANGUNAN BACKBONE

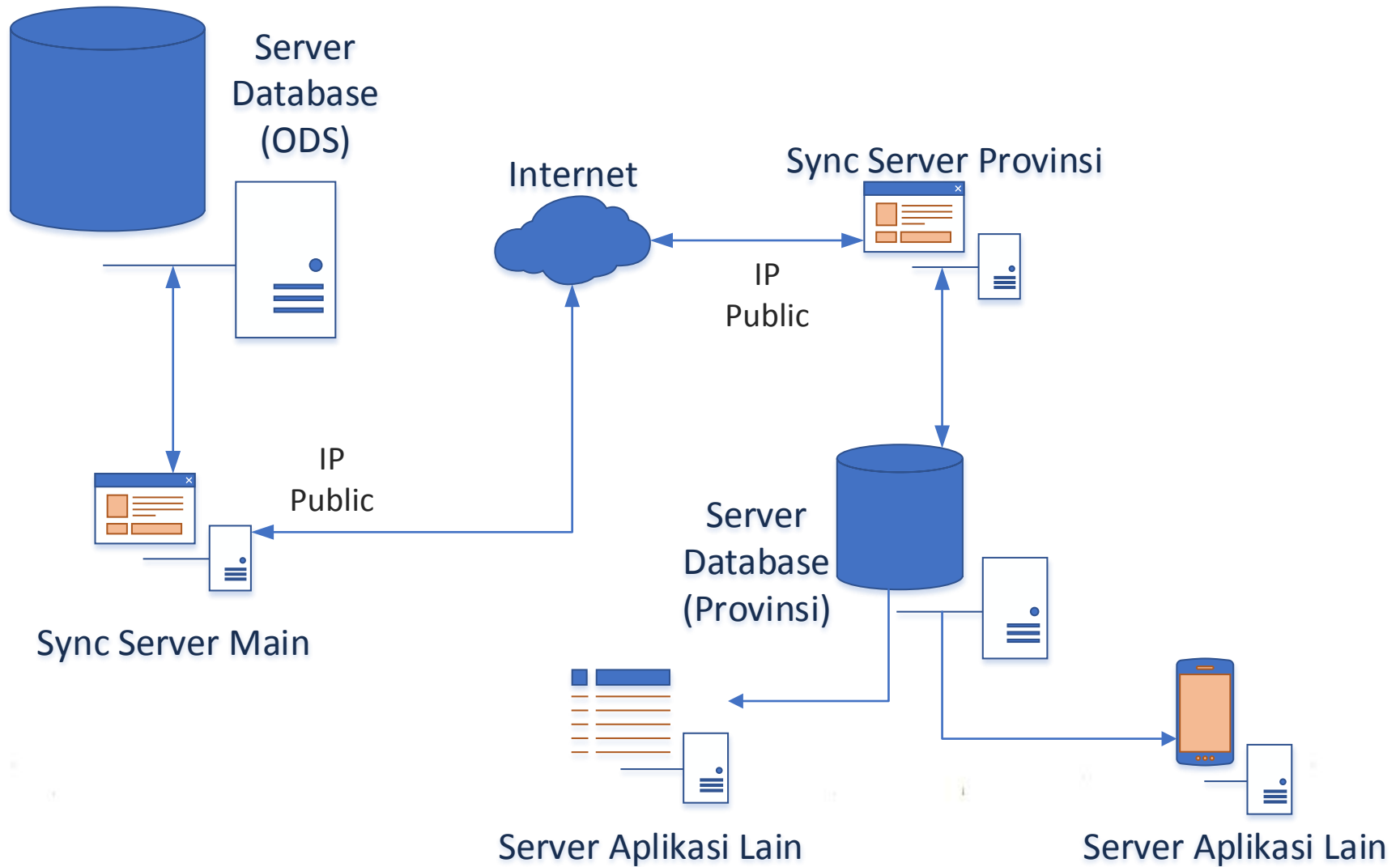
SINKRONISASI DAN DISTRIBUSI DATA PROVINSI & KABUPATEN / KOTA



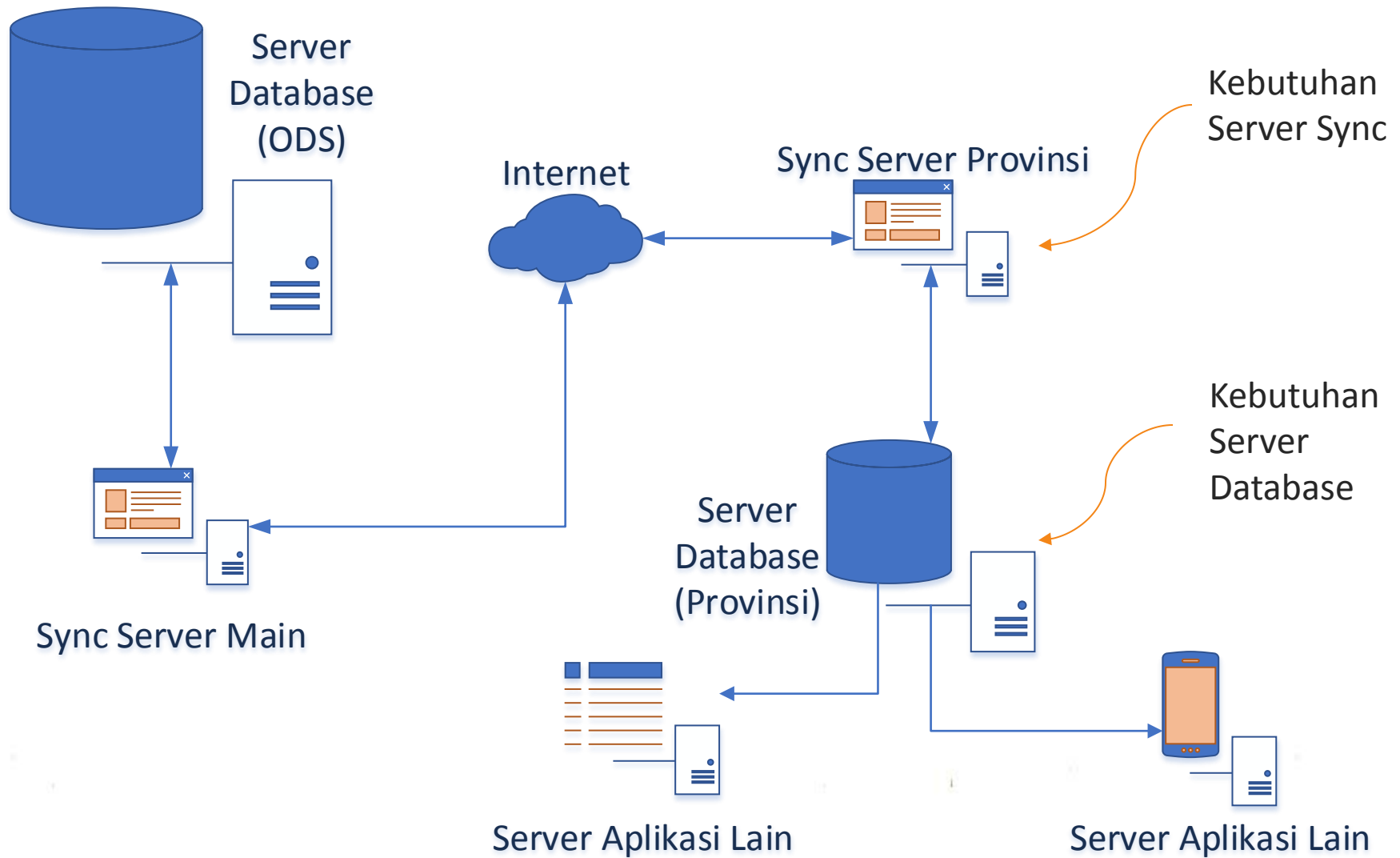
Alur Data



Komunikasi Server



Kebutuhan Server



Database Server

Hardware & OS

Processor type	<ul style="list-style-type: none">• AMD Opteron• AMD Athlon 64• Intel Xeon with Intel EM64T support• Intel Pentium IV with EM64T support
Processor speed	Minimum: 1.4 GHz
Operating system	<ul style="list-style-type: none">• Windows Server 2008 SP2 / 2008 R2 SP1• Windows Server 2012 SP1 / 2012 R2
Memory	Minimum: 1 GB
Hard Disk Drive	Single Disk
Ruang Kosong HDD	<ol style="list-style-type: none">1. 3.6 GB Untuk Instalasi Database Server2. 40 ~ 120 GB Untuk Data3. 1 ~ 5 GB Untuk Temp

Software

Database Server	<ul style="list-style-type: none">• Microsoft SQL Server 2008 R2 Standard• Microsoft SQL Server 2008 R2 Enterprise
-----------------	---

Sync Server

Hardware & OS

Processor type	Pentium III-compatible processor or faster
Processor speed	Minimum: 1.0 GHz
Operating system	<ul style="list-style-type: none">• Windows Server 2008 SP2 / 2008 R2 SP1• Windows Server 2012 SP1 / 2012 R2• Windows 7 SP1 32bit atau 64bit
Memory	Minimum: 512 MB
Hard Disk Drive	Single Disk
Ruang Kosong HDD	<ol style="list-style-type: none">1. 100 MB Untuk Instalasi Aplikasi2. 1 ~ 5 GB Untuk Temp

Software

Web Server	<ul style="list-style-type: none">• Apache 2.2• Microsoft IIS 7.0
Application Server	PHP 5.4

Database Server

Hardware & OS

Processor type	<ul style="list-style-type: none">• AMD Athlon 64• Intel Xeon with Intel EM64T support
Processor speed	Minimum: 2.0 GHz
Operating system	<ul style="list-style-type: none">• Windows Server 2008 R2 SP1• Windows Server 2012 R2
Memory	Minimum: 16 GB
Hard Disk Drive	<ul style="list-style-type: none">• RAID 5 x 3 Blok Minimal 9 Disk• RAID 1 x 3 Blok Minimal 6 Disk
Ruang Kosong HDD	<ol style="list-style-type: none">1. 3.6 GB Untuk Instalasi Database Server2. 40 ~ 300 GB Untuk Data3. 1 ~ 100 GB Untuk Temp

Software

Database Server	<ul style="list-style-type: none">• Microsoft SQL Server 2012 Standard• Microsoft SQL Server 2012 Enterprise
-----------------	---

Sync Server

Hardware & OS

Processor type	<ul style="list-style-type: none">• AMD Opteron• Intel Xeon with Intel EM64T support
Processor speed	Minimum: 1.4 GHz
Operating system	<ul style="list-style-type: none">• Windows Server 2008 SP2 / 2008 R2 SP1• Windows Server 2012 SP1 / 2012 R2
Memory	Minimum: 2 GB
Hard Disk Drive	RAID 1
Ruang Kosong HDD	<ol style="list-style-type: none">1. 100 MB Untuk Instalasi Aplikasi2. 1 ~ 10 GB Untuk Temp

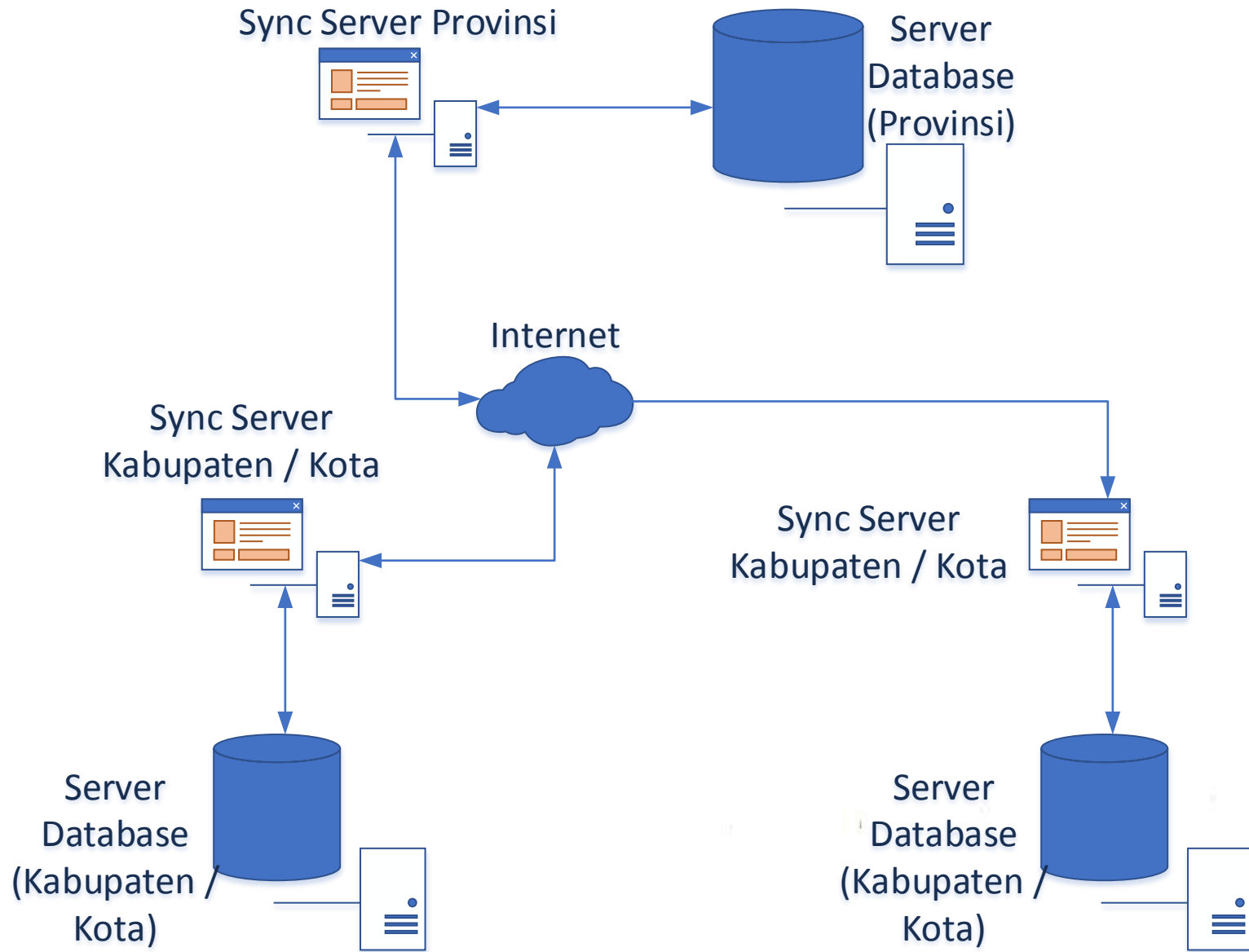
Software

Web Server	<ul style="list-style-type: none">• Apache 2.4• Microsoft IIS 7.5
Application Server	PHP 5.4 atau lebih

Langkah Implementasi

- 1. Persiapan Hardware & Jaringan (Prov)**
- 2. Dump Data awal untuk Provinsi Dari PDSP (PDSP)**
- 3. Instalasi Server Provinsi (PDSP & Prov)**
- 4. Konfigurasi Server Sync PDSP (PDSP)**
- 5. Instalasi Sync Server Provinsi (PDSP & Prov)**
- 6. MoU PDSP dan Provinsi (PDSP & Prov)**
- 7. Copy Data Awal Ke Server Provinsi (PDSP)**
- 8. Testing Sync (PDSP & Prov)**
- 9. Schedule Sync (PDSP & Prov)**

Komunikasi Server



Database Server

Hardware & OS

Processor type	<ul style="list-style-type: none">• AMD Opteron• AMD Athlon 64• Intel Xeon with Intel EM64T support• Intel Pentium IV with EM64T support
Processor speed	Minimum: 1.4 GHz
Operating system	<ul style="list-style-type: none">• Windows Server 2008 SP2 / 2008 R2 SP1• Windows Server 2012 SP1 / 2012 R2
Memory	Minimum: 1 GB
Hard Disk Drive	Single Disk
Ruang Kosong HDD	<ol style="list-style-type: none">1. 3.6 GB Untuk Instalasi Database Server2. 40 ~ 120 GB Untuk Data3. 1 ~ 5 GB Untuk Temp

Software

Database Server	<ul style="list-style-type: none">• Microsoft SQL Server 2008 R2 Standard• Microsoft SQL Server 2008 R2 Express
-----------------	--

Sync Server

Hardware & OS

Processor type	Pentium III-compatible processor or faster
Processor speed	Minimum: 1.0 GHz
Operating system	<ul style="list-style-type: none">• Windows Server 2008 SP2 / 2008 R2 SP1• Windows Server 2012 SP1 / 2012 R2• Windows 7 SP1 32bit atau 64bit
Memory	Minimum: 512 MB
Hard Disk Drive	Single Disk
Ruang Kosong HDD	<ol style="list-style-type: none">1. 100 MB Untuk Instalasi Aplikasi2. 1 ~ 5 GB Untuk Temp

Software

Web Server	<ul style="list-style-type: none">• Apache 2.2• Microsoft IIS 7.0
Application Server	PHP 5.4

Database Server

Hardware & OS

Processor type	<ul style="list-style-type: none">• AMD Opeteron• Intel Xeon with Intel EM64T support
Processor speed	Minimum: 2.0 GHz
Operating system	<ul style="list-style-type: none">• Windows Server 2008 R2 SP1• Windows Server 2012 R2
Memory	Minimum: 8 GB
Hard Disk Drive	<ul style="list-style-type: none">• RAID 1 x 3 Blok Minimal 6 Disk
Ruang Kosong HDD	<ol style="list-style-type: none">1. 3.6 GB Untuk Instalasi Database Server2. 1 ~ 5 GB Untuk Data3. 1 ~ 10 GB Untuk Temp

Software

Database Server	<ul style="list-style-type: none">• Microsoft SQL Server 2012 Standard• Microsoft SQL Server 2012 Express
-----------------	--

Sync Server

Hardware & OS

Processor type	<ul style="list-style-type: none">• AMD Athlon 64• Intel Xeon with Intel EM64T support
Processor speed	Minimum: 1.4 GHz
Operating system	<ul style="list-style-type: none">• Windows Server 2008 SP2 / 2008 R2 SP1• Windows Server 2012 SP1 / 2012 R2
Memory	Minimum: 2 GB
Hard Disk Drive	RAID 1
Ruang Kosong HDD	<ol style="list-style-type: none">1. 100 MB Untuk Instalasi Aplikasi2. 1 ~ 10 GB Untuk Temp

Software

Web Server	<ul style="list-style-type: none">• Apache 2.4• Microsoft IIS 7.5
Application Server	PHP 5.4 atau lebih

Langkah Implementasi

- 1. Persiapan Hardware & Jaringan (Kab / Kota)**
- 2. Dump Data awal untuk Kab / Kota Dari PDSP (PDSP)**
- 3. Instalasi Server Kab / Kota (Prov & Kab / Kota)**
- 4. Konfigurasi Server Sync Prov (PDSP & Prov)**
- 5. Instalasi Sync Server Kab (PDSP, Prov & Kab / Kota)**
- 6. MoU Prov dan Kab / Kota (Prov & Kab / Kota)**
- 7. Copy Data Awal Ke Server Kab / Kota (PDSP & Prov)**
- 8. Testing Sync (PDSP, Prov & Kab / Kota)**
- 9. Schedule Sync (PDSP, Prov & Kab / Kota)**

Terima Kasih

